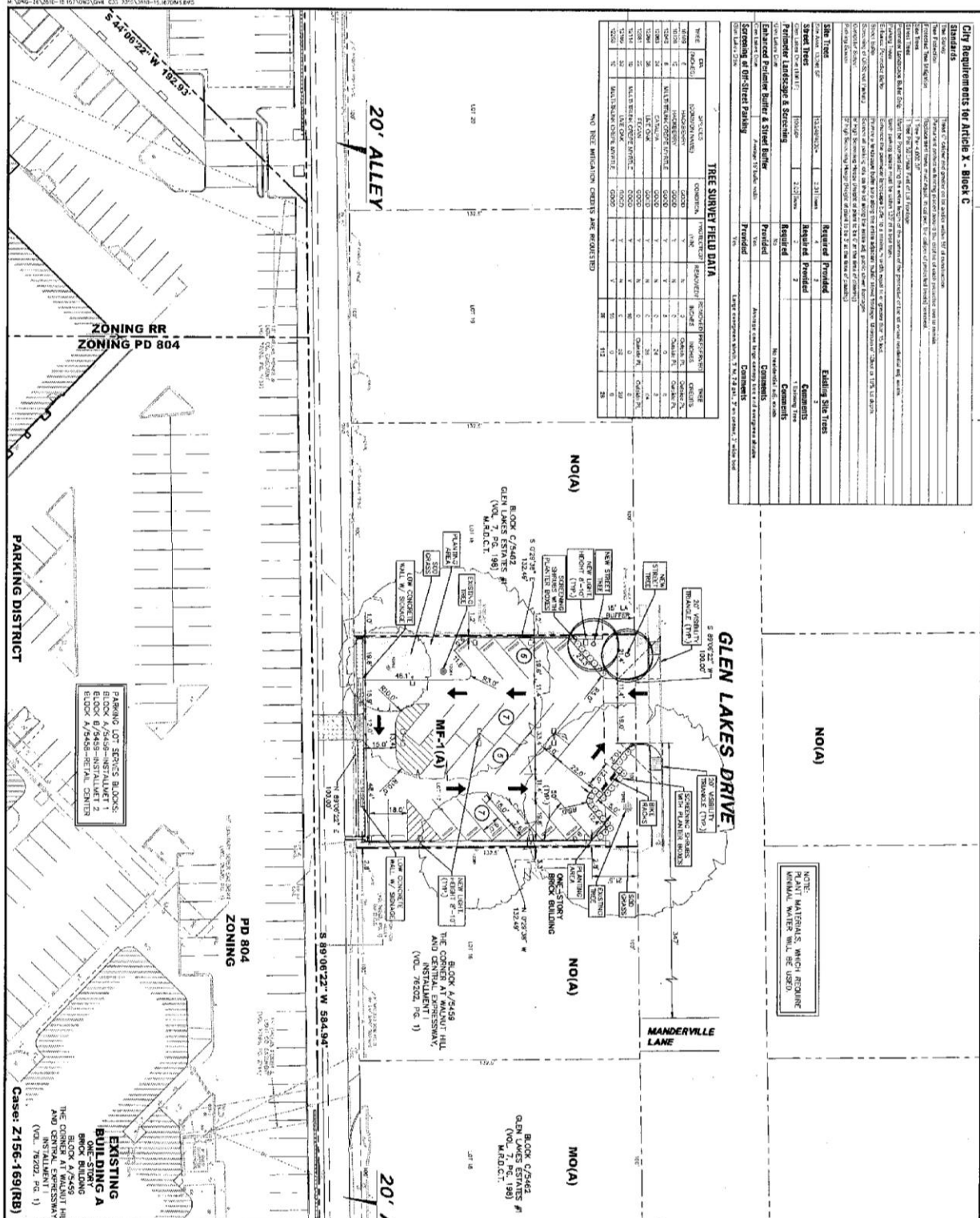


City Requirements for Article X - Block C

Standard	Requirement	Provided	Comments
1.01	Minimum lot area	Yes	
1.02	Minimum lot width	Yes	
1.03	Minimum lot depth	Yes	
1.04	Minimum lot frontage	Yes	
1.05	Minimum lot area ratio	Yes	
1.06	Minimum lot width ratio	Yes	
1.07	Minimum lot depth ratio	Yes	
1.08	Minimum lot frontage ratio	Yes	
1.09	Minimum lot area ratio	Yes	
1.10	Minimum lot width ratio	Yes	
1.11	Minimum lot depth ratio	Yes	
1.12	Minimum lot frontage ratio	Yes	
1.13	Minimum lot area ratio	Yes	
1.14	Minimum lot width ratio	Yes	
1.15	Minimum lot depth ratio	Yes	
1.16	Minimum lot frontage ratio	Yes	
1.17	Minimum lot area ratio	Yes	
1.18	Minimum lot width ratio	Yes	
1.19	Minimum lot depth ratio	Yes	
1.20	Minimum lot frontage ratio	Yes	
1.21	Minimum lot area ratio	Yes	
1.22	Minimum lot width ratio	Yes	
1.23	Minimum lot depth ratio	Yes	
1.24	Minimum lot frontage ratio	Yes	
1.25	Minimum lot area ratio	Yes	
1.26	Minimum lot width ratio	Yes	
1.27	Minimum lot depth ratio	Yes	
1.28	Minimum lot frontage ratio	Yes	
1.29	Minimum lot area ratio	Yes	
1.30	Minimum lot width ratio	Yes	
1.31	Minimum lot depth ratio	Yes	
1.32	Minimum lot frontage ratio	Yes	
1.33	Minimum lot area ratio	Yes	
1.34	Minimum lot width ratio	Yes	
1.35	Minimum lot depth ratio	Yes	
1.36	Minimum lot frontage ratio	Yes	
1.37	Minimum lot area ratio	Yes	
1.38	Minimum lot width ratio	Yes	
1.39	Minimum lot depth ratio	Yes	
1.40	Minimum lot frontage ratio	Yes	
1.41	Minimum lot area ratio	Yes	
1.42	Minimum lot width ratio	Yes	
1.43	Minimum lot depth ratio	Yes	
1.44	Minimum lot frontage ratio	Yes	
1.45	Minimum lot area ratio	Yes	
1.46	Minimum lot width ratio	Yes	
1.47	Minimum lot depth ratio	Yes	
1.48	Minimum lot frontage ratio	Yes	
1.49	Minimum lot area ratio	Yes	
1.50	Minimum lot width ratio	Yes	
1.51	Minimum lot depth ratio	Yes	
1.52	Minimum lot frontage ratio	Yes	
1.53	Minimum lot area ratio	Yes	
1.54	Minimum lot width ratio	Yes	
1.55	Minimum lot depth ratio	Yes	
1.56	Minimum lot frontage ratio	Yes	
1.57	Minimum lot area ratio	Yes	
1.58	Minimum lot width ratio	Yes	
1.59	Minimum lot depth ratio	Yes	
1.60	Minimum lot frontage ratio	Yes	
1.61	Minimum lot area ratio	Yes	
1.62	Minimum lot width ratio	Yes	
1.63	Minimum lot depth ratio	Yes	
1.64	Minimum lot frontage ratio	Yes	
1.65	Minimum lot area ratio	Yes	
1.66	Minimum lot width ratio	Yes	
1.67	Minimum lot depth ratio	Yes	
1.68	Minimum lot frontage ratio	Yes	
1.69	Minimum lot area ratio	Yes	
1.70	Minimum lot width ratio	Yes	
1.71	Minimum lot depth ratio	Yes	
1.72	Minimum lot frontage ratio	Yes	
1.73	Minimum lot area ratio	Yes	
1.74	Minimum lot width ratio	Yes	
1.75	Minimum lot depth ratio	Yes	
1.76	Minimum lot frontage ratio	Yes	
1.77	Minimum lot area ratio	Yes	
1.78	Minimum lot width ratio	Yes	
1.79	Minimum lot depth ratio	Yes	
1.80	Minimum lot frontage ratio	Yes	
1.81	Minimum lot area ratio	Yes	
1.82	Minimum lot width ratio	Yes	
1.83	Minimum lot depth ratio	Yes	
1.84	Minimum lot frontage ratio	Yes	
1.85	Minimum lot area ratio	Yes	
1.86	Minimum lot width ratio	Yes	
1.87	Minimum lot depth ratio	Yes	
1.88	Minimum lot frontage ratio	Yes	
1.89	Minimum lot area ratio	Yes	
1.90	Minimum lot width ratio	Yes	
1.91	Minimum lot depth ratio	Yes	
1.92	Minimum lot frontage ratio	Yes	
1.93	Minimum lot area ratio	Yes	
1.94	Minimum lot width ratio	Yes	
1.95	Minimum lot depth ratio	Yes	
1.96	Minimum lot frontage ratio	Yes	
1.97	Minimum lot area ratio	Yes	
1.98	Minimum lot width ratio	Yes	
1.99	Minimum lot depth ratio	Yes	
2.00	Minimum lot frontage ratio	Yes	

TREE SURVEY FIELD DATA

Tree ID	Species	DBH (in)	Height (ft)	Health	Location
T001	SPRUELLS	10.0	15.0	Good	Lot 17
T002	SPRUELLS	10.0	15.0	Good	Lot 17
T003	SPRUELLS	10.0	15.0	Good	Lot 17
T004	SPRUELLS	10.0	15.0	Good	Lot 17
T005	SPRUELLS	10.0	15.0	Good	Lot 17
T006	SPRUELLS	10.0	15.0	Good	Lot 17
T007	SPRUELLS	10.0	15.0	Good	Lot 17
T008	SPRUELLS	10.0	15.0	Good	Lot 17
T009	SPRUELLS	10.0	15.0	Good	Lot 17
T010	SPRUELLS	10.0	15.0	Good	Lot 17
T011	SPRUELLS	10.0	15.0	Good	Lot 17
T012	SPRUELLS	10.0	15.0	Good	Lot 17
T013	SPRUELLS	10.0	15.0	Good	Lot 17
T014	SPRUELLS	10.0	15.0	Good	Lot 17
T015	SPRUELLS	10.0	15.0	Good	Lot 17
T016	SPRUELLS	10.0	15.0	Good	Lot 17
T017	SPRUELLS	10.0	15.0	Good	Lot 17
T018	SPRUELLS	10.0	15.0	Good	Lot 17
T019	SPRUELLS	10.0	15.0	Good	Lot 17
T020	SPRUELLS	10.0	15.0	Good	Lot 17



NOTE: MATERIALS WHICH REQUIRE PERMITS WILL BE USED

LAND USE: PARKING 26 SPACES
 PARKING: REDEVELOPMENT
 SITE AREA: 13,250 SQ. FT.
 LANDSCAPING:
 MANDATORY REQUIREMENTS:
 PROPOSED SITE TREES: 4
 SITE TREES TO BE REMOVED: 4
 NEW TREES: 1 (4 CALIPER INCHES)
 EXISTING TREES: 1 (4 CALIPER INCHES)
 12084, 12083, 12082
 (112 CALIPER INCHES OF EXISTING TREES)
 REQUIRED STREET TREES: 2
 STREET TREES PROVIDED: 2
 SEE TREE SURVEY FIELD DATA TREE NO. 12196
 (SEE CALIPER INCHES OF EXISTING TREES)
 PARKING LOT TREES: COMPLY
 DESIGN STANDARDS:
 STREET BARRIERS: BARRIER PARKING: NOT REQUIRED
 STREET BARRIERS: BARRIER NOT REQUIRED
 SEE CITY REQUIREMENTS FOR ARTICLE X
 BLOCK C TABLE THIS SHEET

ALL DIMENSIONS ARE TO BACK-OF-CURB UNLESS OTHERWISE NOTED

PRELIMINARY
 NOT FOR CONSTRUCTION
 THIS PLAN IS A PRELIMINARY PLAN AND IS NOT TO BE USED FOR CONSTRUCTION OR FOR OBTAINING PERMITS. THE CITY ENGINEER'S OFFICE HAS REVIEWED THIS PLAN FOR CONFORMANCE WITH THE CITY REQUIREMENTS FOR ARTICLE X, BLOCK C, TABLE THIS SHEET.

DESIGNED FOR PRELIMINARY PLANNING PURPOSES ONLY
 (SUBJECT TO REVIEW BY THE CITY ENGINEER)
 THIS PLAN IS A PRELIMINARY PLAN AND IS NOT TO BE USED FOR CONSTRUCTION OR FOR OBTAINING PERMITS. THE CITY ENGINEER'S OFFICE HAS REVIEWED THIS PLAN FOR CONFORMANCE WITH THE CITY REQUIREMENTS FOR ARTICLE X, BLOCK C, TABLE THIS SHEET.

Pacheco Koch 7525 MARSH LANE, SUITE 400
 DALLAS, TEXAS 75231
 ARCHITECT

THE HILL
 BLOCK C / 5462 - LOT 17
 SITE REDEVELOPMENT
 CYPRESS EQUITIES
 CITY OF DALLAS, DALLAS COUNTY, TEXAS

DATE	SCALE	REVISED	BY	NO.
08/14/14	1"=40'	3/17/14	89/15	EX-1